

EFRC Training Workshop

Skid Mounted Reciprocating Gas Compressors

Jason P. Ashley



September 10, 2014

EFRC Conference Training 1

What is a Skid or Package?

Skid (*noun*) - A low mobile platform on which various items are placed for ease of handling, moving...etc.

Package (*noun*) – A finished product contained in a unit that is suitable for immediate installation and operation. (*verb*) – combining various products for sale as one unit

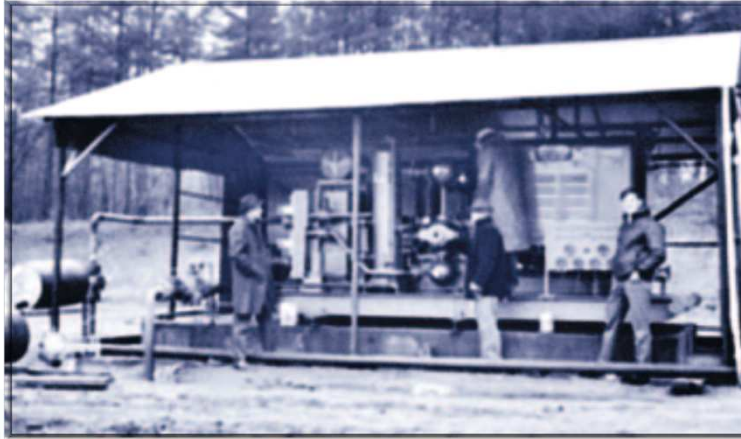


September 10, 2014

EFRC Conference Training 2

Introduction

Reciprocating gas compressor packages/skids have been in production for over 50 years.



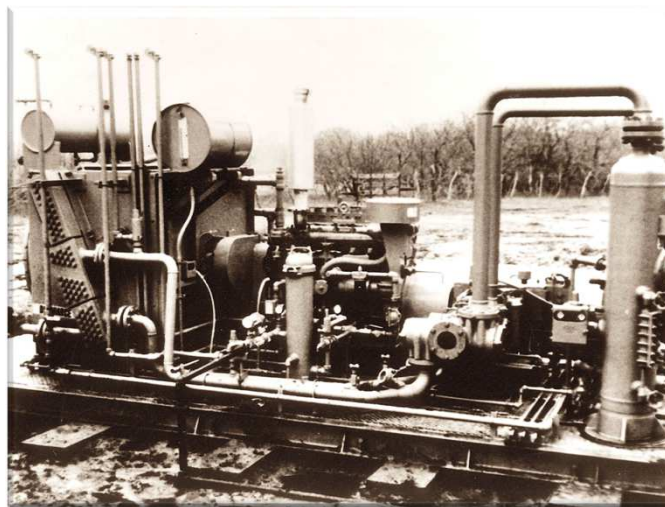
EFRC

September 10, 2014

EFRC Conference Training

3

Though compressor packages in the beginning were basic in design and application, they fulfilled the need at that time effectively.



EFRC

September 10, 2014

EFRC Conference Training

4

As the demand for reciprocating compressor packages increased, so did the research and development, to meet the needs of the clients and varying applications.



EFRC

September 10, 2014

EFRC Conference Training

5

We've Come a Long Way

Through constant research and development, gas package technology has made many advances, but there is always room for improvement.



EFRC

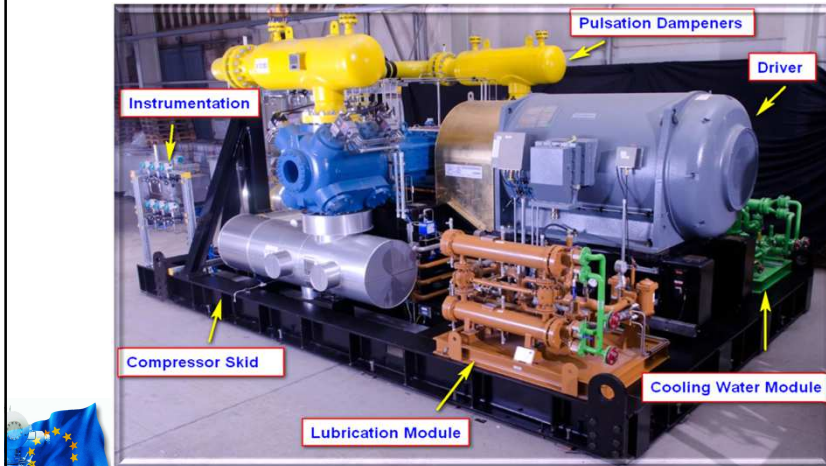
September 10, 2014

EFRC Conference Training

6

Components of a Package

With proper planning, engineering procedures and construction practices, there is no limit to the component that can be installed on a skid.

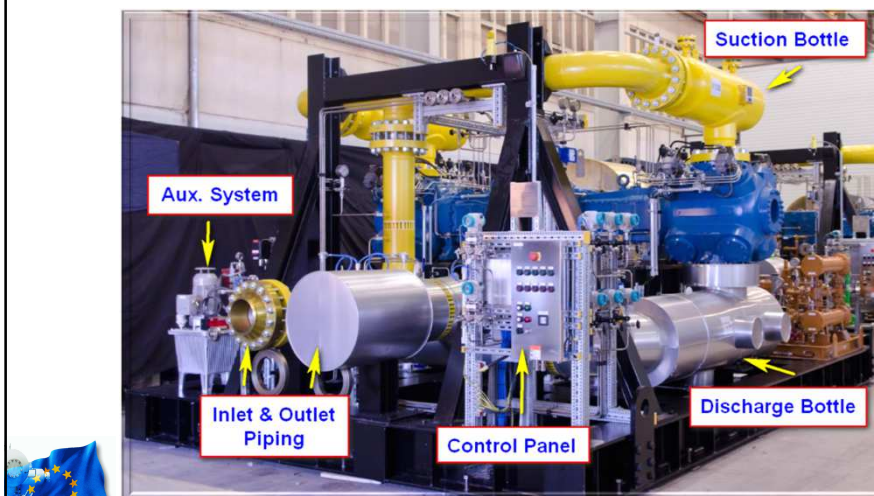


September 10, 2014

EFRC Conference Training

7

With the installation of multiple components on a skid, you develop into a “plug & play” attitude.



September 10, 2014

EFRC Conference Training

8

Mounting Techniques

Each type of mount has certain challenges, design specifications and cost, the best mount is one that meets the requirements of all three.

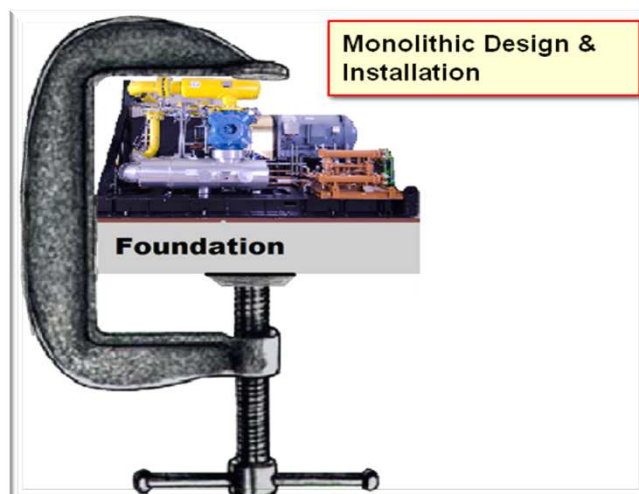


September 10, 2014

EFRC Conference Training

9

With proper engineering, construction and installation procedures, you can achieve a monolithic attitude.



September 10, 2014

EFRC Conference Training

10

With reciprocating compressors ranging in sizes up to 10,000 hp. (7457 kw) you have unlimited possibilities for skid designed applications.



Number of throws	4	6
Rated power, BHP	6667	10000
Rated power, kW	4972	7457



Number of throws	2	4
Rated Power, BHP	252	504
Rated Power, kW	188	376



EFRC

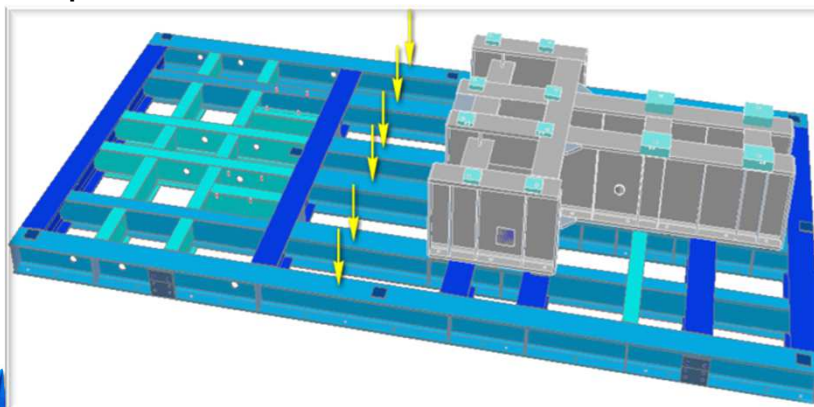
September 10, 2014

EFRC Conference Training

11

Primary Skid Beams

The primary skid beams support the pedestal and auxiliary systems and also provide the anchoring points to the foundation, which act as a pathway for energy to be dissipated.



EFRC

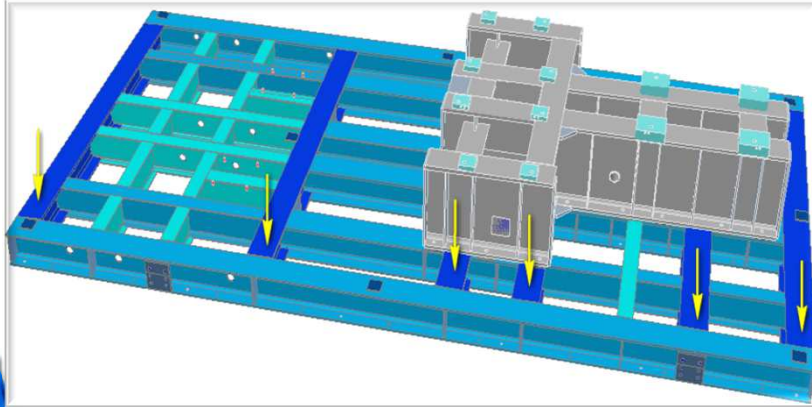
September 10, 2014

EFRC Conference Training

12

Auxiliary Skid Beams

The auxiliary skid beams provide stiffening to the primary beams and provide additional support to the skid and components and also are location of additional anchor and jack bolts.



EFRC

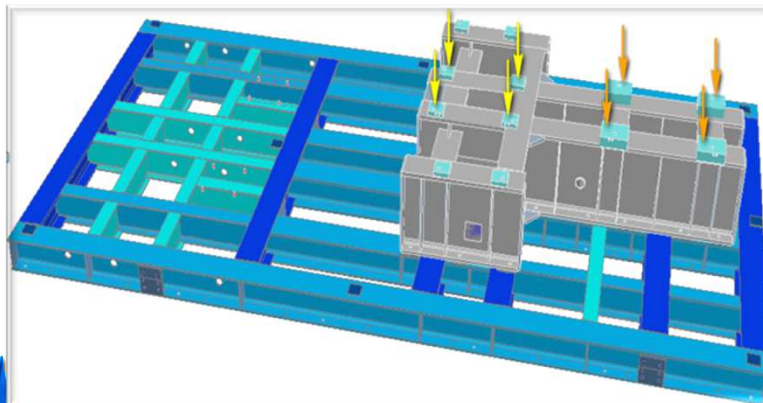
September 10, 2014

EFRC Conference Training

13

Driver & Compressor Mounting

They provide a precision mounting point for the installation of the compressor and the driver to the pedestal.



EFRC

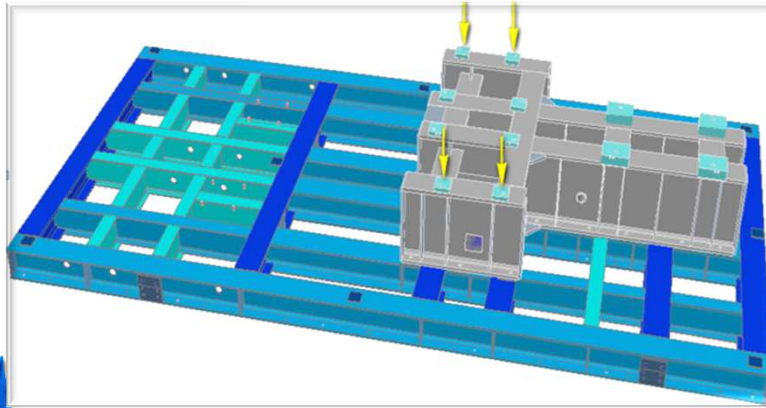
September 10, 2014

EFRC Conference Training

14

Cross Head Support

Should provide vertical support to the cross head guide, and also prevent horizontal movement.



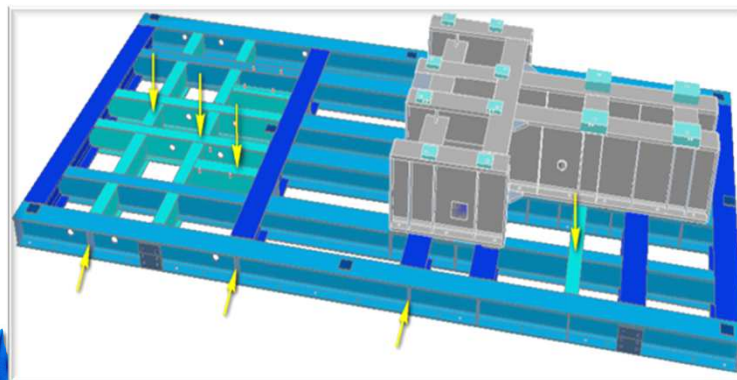
September 10, 2014

EFRC Conference Training

15

Auxiliary Systems & Gussets

The mounting areas for the auxiliary systems should be designed to withstand the forces introduced by that system or component. The gussets and other stiffening plates are used to increase the shear capacity of the beam, and to prevent the beam from twisting or rolling.



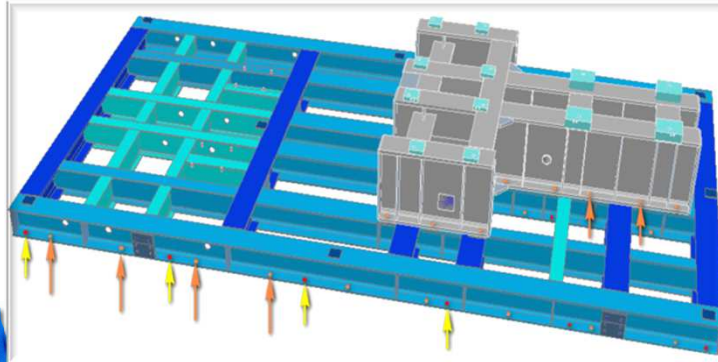
September 10, 2014

EFRC Conference Training

16

Anchor Bolts & Jack Bolts Locations

The location of the anchor bolts (orange arrows) are critical, since they provide the primary means of connection to the foundation. Jack bolts (yellow arrows) are used for the leveling and support of the skid until the skid is grouted. Jack bolts should be located on either side of anchor bolts and in locations of heavy loads.



EFRC

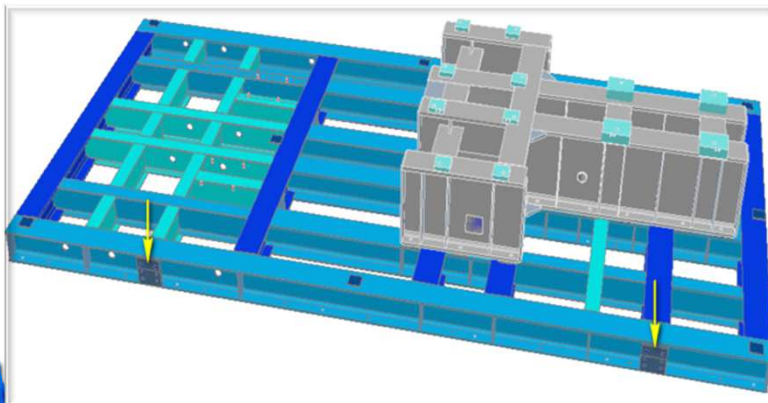
September 10, 2014

EFRC Conference Training

17

Lifting Points/Lugs

The location of the lifting lugs, with consideration to the center of gravity, is critical to the portability of the completed compressor package.



EFRC

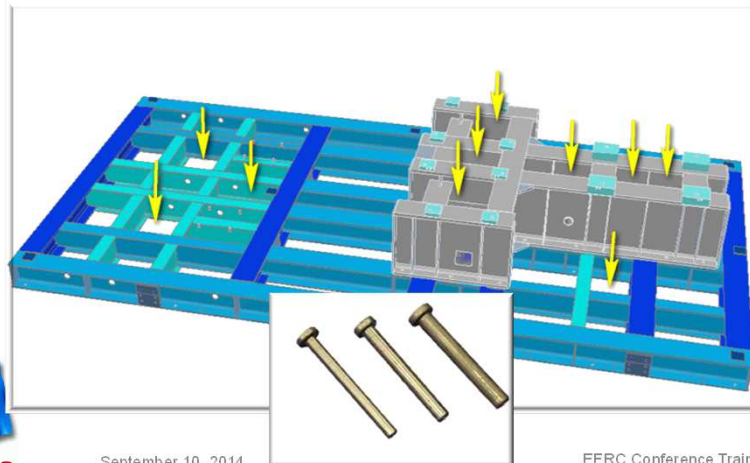
September 10, 2014

EFRC Conference Training

18

Concrete Fill Locations & Nelson Studs

By filling specific locations of the skid with concrete it will provide additional dampening and added stiffness to the frame. Nelson studs or equivalent should be use to help promote a bond between the beams and the concrete.

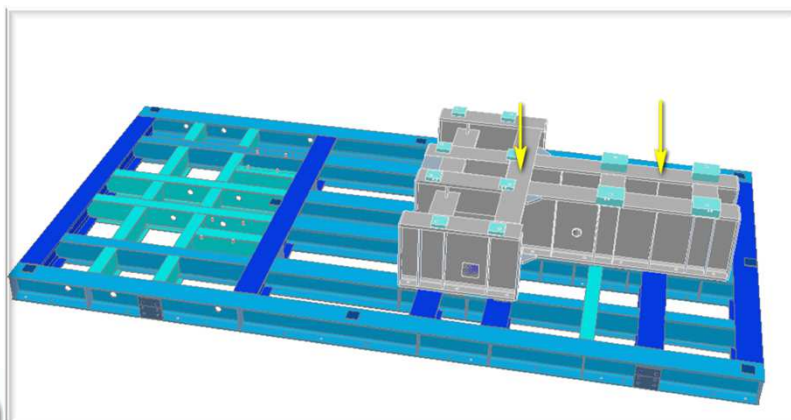


September 10, 2014

EFRC Conference Training 19

Compressor & Driver Pedestal

Provide precision mounting points for the reciprocating compressor and driver and should also provide adequate support.



September 10, 2014

EFRC Conference Training 20

Anchor Bolt/Foundation Stress Study

By completing stress studies of the skid design you are able to see the functionality of your skid, through varying loads and stresses.

Some of the common variables used during these stress studies are...

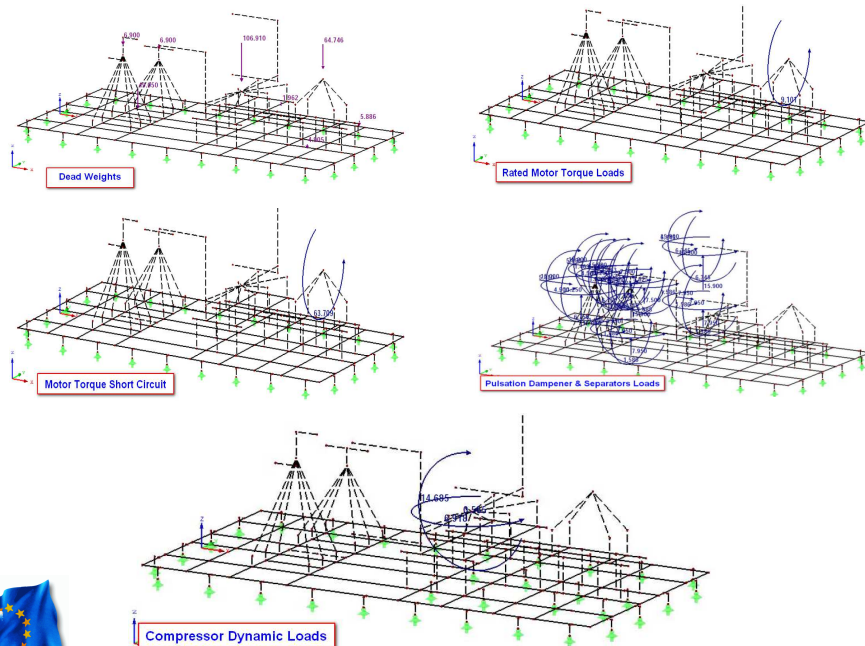
- Dead Weights of Components
- Rated Motor Torque Loads
- Motor Torque Loads (short circuit & phase opposition).
- Piping Loads (dynamic)
- Compressor Loads



EFRC

September 10, 2014

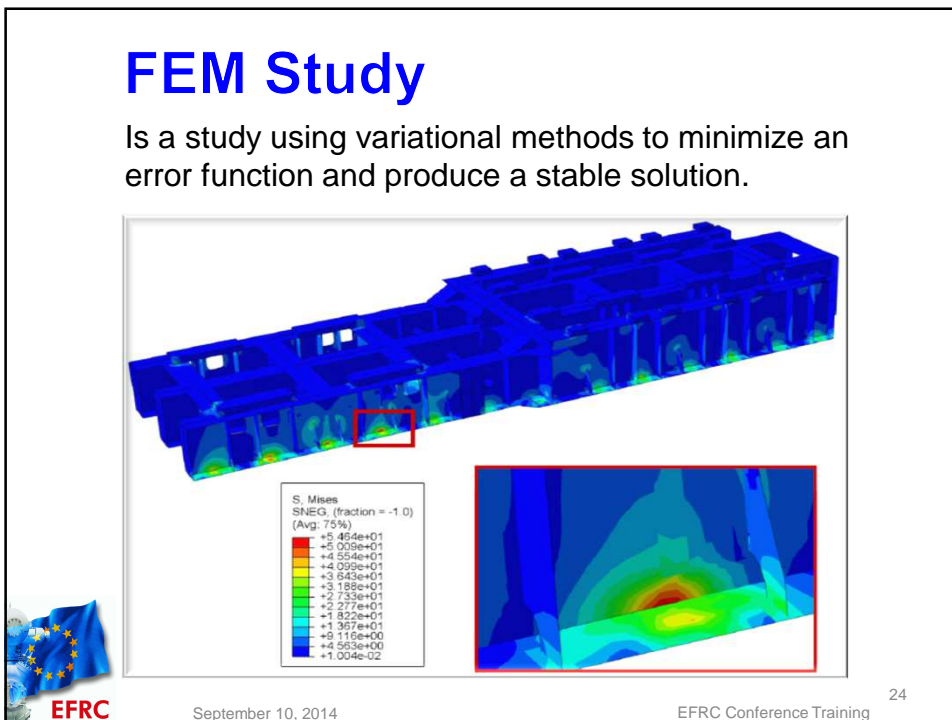
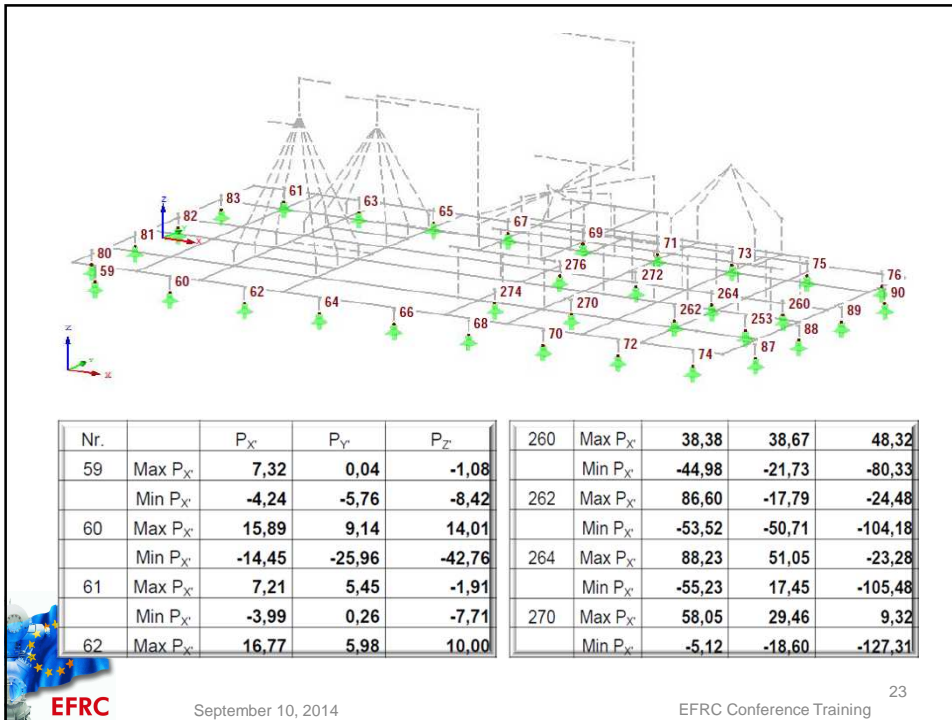
EFRC Conference Training 21



EFRC

September 10, 2014

EFRC Conference Training 22





Benefits of Skid Mounted Reciprocating Compressor Packages

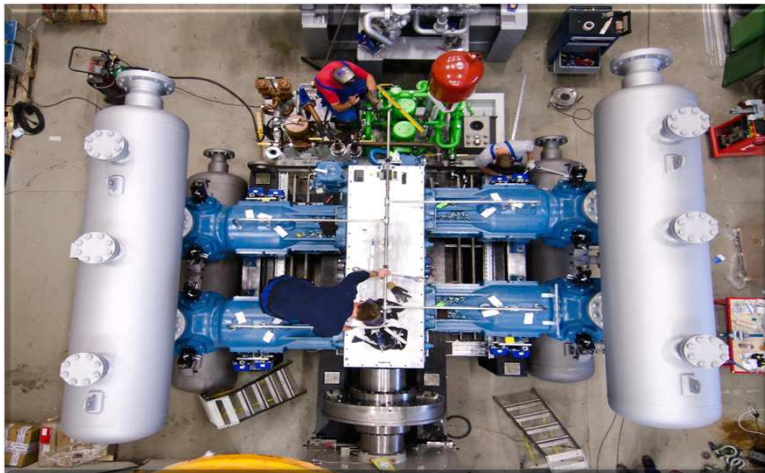


EFRC

September 10, 2014

EFRC Conference Training ²⁵

Higher Quality and Reliability Ensured, & Single Source Accountability



EFRC

September 10, 2014

EFRC Conference Training ²⁶

Complete Package on Delivery



EFRC

September 10, 2014

EFRC Conference Training

27

Portability and Ease of Transportation



EFRC

September 10, 2014

EFRC Conference Training

28

Skid Mounted Compressor are Versatile



September 10, 2014

EFRC Conference Training

29

Review

The development of reciprocating gas compressors have been an evolution over the last 50 years.

With proper planning, engineering practices and construction procedures, multiple components can be installed on the skid effectively, to create a "plug & play" package.

Reciprocating compressors come in a variety of sizes to meet the needs of most clients.

Detailed planning and engineering is essential in designing a skid that will meet and address all of the forces introduced by the compressor package.

Advantages of skid mounted reciprocating compressor are, higher quality and reliability, single source accountability, complete package on delivery, ease of transportation and portability and extremely versatile.



September 10, 2014

EFRC Conference Training

30